

SafeCopy 2 enables the user to make forensically sound copies of files located on any drive—either local or networked. **SafeCopy 2** features:

► High Speed Copying

SafeCopy 2 has a unique bitstream copy engine that creates copies of files and directories that not only retain the file contents, but also retain the file timestamps and original metadata ensuring the proper chain of custody. With speeds that are up to 4 times faster than Robocopy. As the collections get larger, so do the time savings.

► Choice of Copy Engines

On occasion, there will be the need for the selectable options available in Robocopy. **SafeCopy 2** offers the choice for which engine to use when making copies of files and directories.

► Multiple Directory Selection

SafeCopy 2 allows users to select multiple directories for copying. The easy-to-use interface allows for easy directory selection from within a familiar directory tree structure, or just drag and drop the files to be copied from the Windows Explorer interface. Single files can also be selected and copied.

► Use a File List as Source

If you already have a list of files that need collection, **SafeCopy 2** allows users to use a file list as a source for copying. Browse to the file list and the files will be collected safely.

► File Extension and Date Range Filtering

SafeCopy 2 provides the ability to filter a data collection by file extension and date range. The option to include or exclude files can also be used with a pre-existing list of file extensions.

► File Hashing

When copying files, **SafeCopy 2** retains the crucial metadata. To ensure the copies made with **SafeCopy 2** are identical to the originals, it can calculate the MD5 hash values of the source files.

► Generation of Chain of Custody File

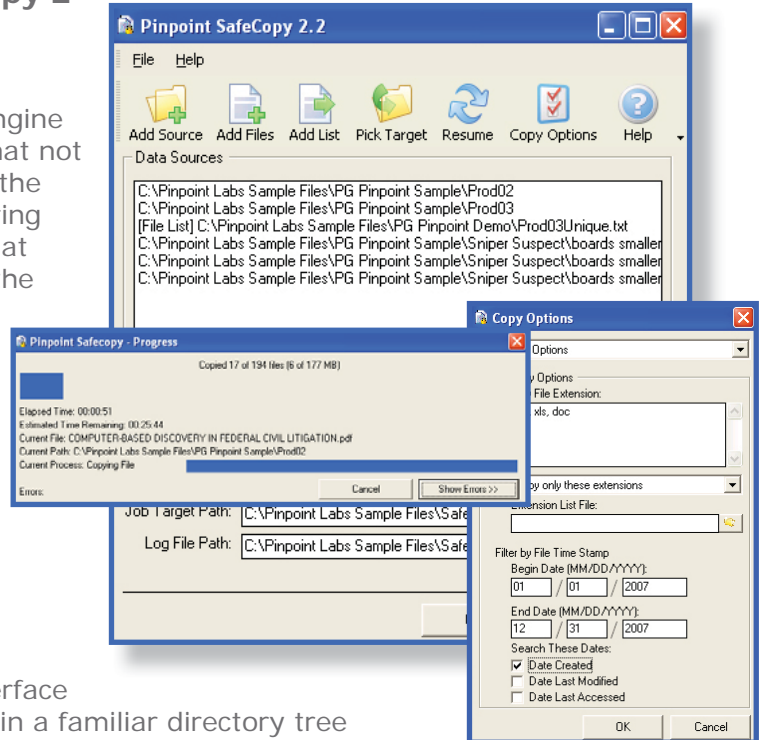
SafeCopy 2 provides a chain of custody log file which proves that the copies made are forensically sound. This log file contains important information such as the date and time the copies were made and the MD5 hash values calculated in the source and destination files.

► Error Reporting

If a file is copied and the source hash value does not match the destination hash value, an error is reported instantly in the progress window and added to the error log. Once the copy process is completed, **SafeCopy 2** generates a detailed log file for easy review.

► Resuming

If you experience an unexpected system crash or power outage during the copy process, no need to worry. **SafeCopy 2** automatically saves all settings and the job progress in a job profile allowing users to easily resume incomplete copy jobs.



► **Mobile Edition - U3 Version**

Now available, **SafeCopy 2 Mobile Edition** allows you to perform data collections on any PC where you can plug in a U3 USB device. Utilizing the U3 platform for portability and security, **SafeCopy 2** will run from U3 compatible flash drives, also known as "U3 Smart Drives," eliminating the need to install the software on servers or client machines. Without the need to install on the host machine, **SafeCopy 2 Mobile Edition** leaves no "footprint". Now you can take all the features and functionality of **SafeCopy 2** wherever you go.

► **What is U3?**

U3 is a standalone application environment that allows users to install and run software directly from a USB device. **SafeCopy 2 Mobile Edition** is perfect for file collection, acquisition or even in-house use when you need the freedom to use **SafeCopy 2** wherever you choose.

“When we were looking for alternative applications that handled onsite file collections we decided to try **SafeCopy 2 Mobile Edition**. We found it provided an intuitive interface, MD5 hash copy verification and we could run it without installing software on the server or client machines. Our technicians love the ease of use and portability!”

Warren Kruse
VP of Data Forensics and Analytics
Encore Legal Solutions

NEW! LICENSING OPTIONS

► **SafeCopy 2 Server**

- ✓ Perfect for companies with ongoing collection needs
- ✓ Freedom to use **SafeCopy 2** on any computer on your network
- ✓ Runs from server, external USB or NAS device
- ✓ Small footprint
- ✓ No installation required

► **SafeCopy 2 Nomad**

- ✓ Easily distribute temporary **SafeCopy** license
- ✓ Perfect for clients who have a one time, short term collection project
- ✓ Hassle free – no USB drive or software to track or return
- ✓ Runs from external hard drive, flash drive or server
- ✓ Create job file for automated collection

► **SafeCopy 2 Enterprise**

- ✓ Save money
- ✓ Get access to all four **SafeCopy** editions
- ✓ Use in-house for remote collection or send a temporary license to clients
- ✓ Easily register and download the latest software
- ✓ No installation required