

**SafeCopy 2 Server Edition** is the newest addition to the SafeCopy family and runs from a system or network shared folder, a server, or a Network Attached Storage (NAS) device. This allows you to make forensically sound copies of files located on any drive virtually anywhere.

### ► High Speed Copying

**SafeCopy 2** has a unique bitstream copy engine that creates copies of files and directories that retain the file contents, file timestamps and original metadata. This ensures the proper chain of custody is intact. Copying is up to four times as fast as Robocopy, saving significant time.

### ► Multiple Directory Selection

**SafeCopy 2** lets you select multiple directories for copying within a familiar tree structure format, or you can just drag and drop the files to be copied from the Windows Explorer interface. Single files can also be selected and copied.

### ► Use a File List as Source

If you already have a list of files that need collection, **SafeCopy 2** allows you to use a file list as a source for copying. Browse to the file list and the files will be collected safely.

### ► File Extension and Date Range Filtering

**SafeCopy 2** allows you to filter a data collection by file extension and date range. The option to include or exclude files can also be used with a pre-existing list of file extensions.

### ► File Hashing

When copying files, **SafeCopy 2** retains the crucial metadata. To ensure the copies made with **SafeCopy 2** are identical to the originals, it can calculate the MD5 hash values of the source files.

### ► Generation of Chain of Custody File

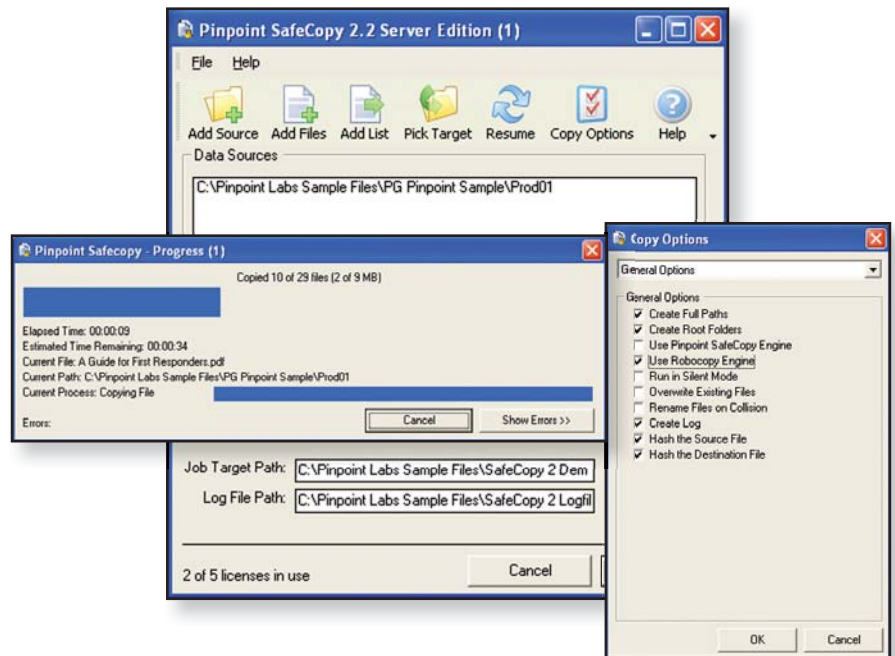
**SafeCopy 2** provides a chain of custody log file which proves that the copies made are forensically sound. This log file contains important information such as the date and time the copies were made and the MD5 hash values calculated in the source and destination files.

### ► Error Reporting

If a file is copied and the source hash value does not match the destination hash value, an error is reported instantly in the progress window and added to the error log. Once the copy process is completed, **SafeCopy 2** generates a detailed log file for easy review.

### ► Resuming

If you experience an unexpected system crash or power outage during the copy process, no need to worry. **SafeCopy 2** automatically saves all settings and the job progress in a job profile allowing users to easily resume incomplete copy jobs.



**▶ SafeCopy 2 Server Edition**

Incomplete and undocumented electronic discovery collections occur every day. The result of mishandling these files can be costly to both the client and their legal counsel. Proper file collection methods should be discussed at the beginning of each case.

When collecting electronic discovery, you should use processes and applications that preserve and verify collected electronic files with minimal impact on client systems. Without these, creating defensible and verifiable electronic discovery productions and evidence authentication is difficult, if not impossible.

**▶ SafeCopy 2 Server Features:**

- ✓ Perfect for companies with ongoing collection needs
- ✓ Freedom to use SafeCopy 2 on any computer on your network
- ✓ Runs from server, external USB or NAS device
- ✓ Small footprint
- ✓ No installation required

**ADDITIONAL LICENSING OPTIONS****▶ SafeCopy 2 Mobile**

- ✓ Verifies files with MD5 hash
- ✓ Preserves file timestamps, metadata and content
- ✓ Copies files in paths greater than 255 characters (Up to 32,000)
- ✓ Filters by date range and file extension
- ✓ Creates chain of custody report
- ✓ Copies from file list
- ✓ Optimizes network for high speed copying

**▶ SafeCopy 2 Nomad**

- ✓ Easily distribute temporary SafeCopy licenses
- ✓ Perfect for clients who have a one time, short term collection project
- ✓ Hassle free – no USB drive or software to track or return
- ✓ Runs from external hard drive, flash drive or server
- ✓ Create job file for automated collection

**▶ SafeCopy 2 Enterprise**

- ✓ Save money
- ✓ Get access to all four SafeCopy editions
- ✓ Use in-house for remote collection or send a temporary license to clients
- ✓ Easily register and download the latest software
- ✓ No installation required